

CLIENT CONFIDENTIAL

Client **Alu Rehab AS**

Test Item **Netti III**

Test **ISO 7176-19 Wheelchair Test**

Millbrook Report No. **10/1384**

Millbrook Project No. **CR0096-010-01**

Millbrook Test No. **S11288**

Author:



M. Bell
Engineer

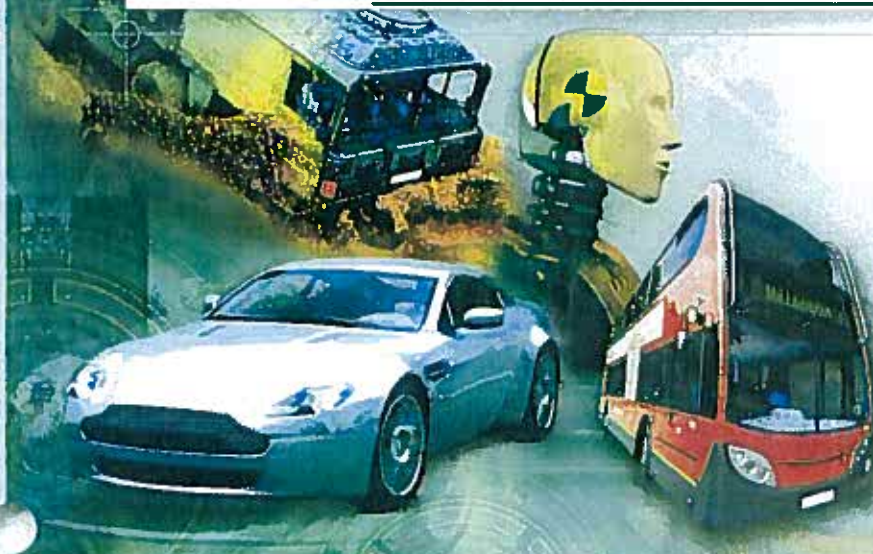
Approved:



K. Forinton
Principal Engineer

Date:

4th October 2010



Millbrook Proving Ground Ltd
Millbrook, Bedford, MK45 2JQ, UK
Tel: +44 (0)1525 404242
Fax: +44 (0)1525 403420
Email: info@millbrook.co.uk
www.millbrook.co.uk

Test Report



Test Results

ISO/NP 7176/19

7th July 2008

Section 5.2 - Dynamic Performance Requirements

| Wheelchair: | Netti III | RESULTS |
|--------------|---------------------------------------------------------------------------------------------------------------------------------------------------------------------|-----------------|
| Occupant: | HII 50 %ile (75 kg) | |
| 5.2.1 | During the Test | |
| | a). Horizontal ATD and wheelchair excursion limits as per limits shown in Table 3:- | |
| | Was the horizontal movement of the test wheelchair P- Point (X_{wc}) less than 200 mm (± 5 mm) | PASS 47 mm |
| | Was the horizontal movement of the dummy knee (X_{knee}) less than 375 mm (± 5 mm) | PASS 296 mm |
| | Was the horizontal movement of the dummy head (X_{head}) less than 650 mm (± 5 mm) | PASS 489 mm |
| | b). Was the ratio $X_{knee}/X_{wc} > 1.1:1$ | PASS 6.3 : 1 |
| | c). Not Measured | |
| | Did the batteries of powered wheelchairs, or their surrogate parts:- | |
| | i). move outside of the wheelchair footprint | N/A |
| | ii). move into the wheelchair user's space | N/A |
| 5.2.2 | Post Test | |
| | a). Did the wheelchair remain upright on the test platform Did the ATD remain in a seated posture in the test wheelchair with a torso angle less than 45° | PASS |
| | b). Did the wheelchair securement points show visible signs of material failure | PASS |
| | c). Did any components of a mass greater than 100g become detached from the wheelchair | PASS |
| | d). Did any occupant contactable components fragment or separate with an edge of less than 2mm | PASS |
| | e). Did any primary load carrying components of the wheelchair show any visible signs of failure | PASS |
| | f). Did any 'tilt in space' locking mechanisms show signs of failure | PASS |
| | g). Was the ATD released from the wheelchair without the use of tools | PASS |
| | h). Was the wheelchair released from the restraint system without the use of tools | PASS |
| | i). Was the average decrease of H-Point height relative to the wheelchair platform less than 20% of the pre-test height. | PASS |
| | Has the wheelchair satisfied the Dynamic Test requirements of ISO/FDIS 7176/19 of 7th July 2008 | PASS |